

Call for SMEs HealthChain Follower SMEs

Murcia Region (Spain)

9th July 2024

María Bernabé, Project Manager - Ticbiomed
Gorka Sánchez, Head of Innovation - Servicio Murciano de Salud
Miguel Alborg, CCO - IDI EIKON
Adrià Maceira, CEO - Renalyse

Housekeeping rules



This session will be entirely recorded and will be available on HealthChain channels 1-2 days after this session.



All participants should be **muted**.



Feel free to post your questions in the **zoom Q&A box**.



Content

- 01** HealthChain project
- 02** The Open Call for SMEs
- 03** Servicio Murciano de Salud
- 04** Challenges, solutions & follower SMEs work
- 05** Q&A
- 06** Next steps

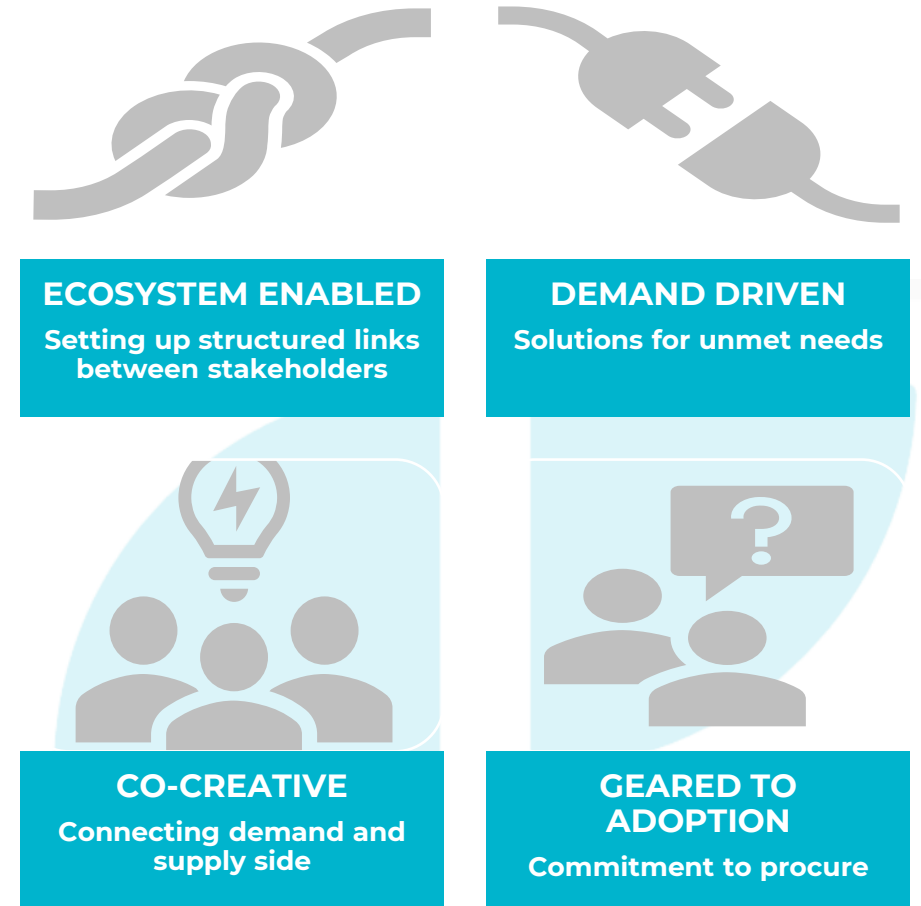
THE PROJECT IN A NUTSHELL

01

What is HealthChain?

A NEW INNOVATION MODEL

- Increases the capacity of healthcare organisations to innovate
- Results in digital solutions with a higher success rate
- Increases and speeds up the internationalisation processes of companies



10 regional ecosystems



Romania

North-West Romania



Greece

Western



The Netherlands

East Netherlands



Belgium

Flanders



Croatia

Primorsko-Goranska



Portugal

Centro



Spain

Murcia | Navarra | Castilla y León



Slovenia

Western



Increasing the capacity of regional innovation ecosystems in emerging regions to participate in global value chains

THE OPEN CALL FOR SMEs

02

HealthChain Open Call for SMEs

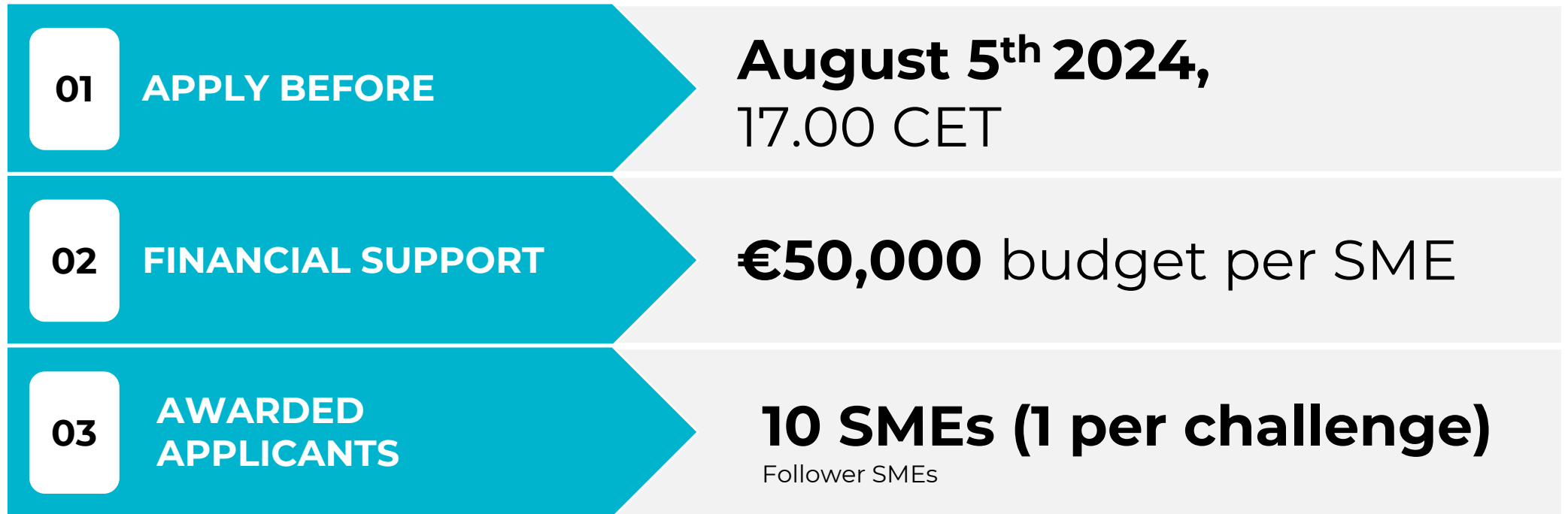


Select and support 10 follower SMEs (Solvers) to complement the expertise of 10 leading SMEs and jointly co-create a solution addressing the specific innovation needs (Challenges) identified by the healthcare organisations (Challengers).

BENEFITS FOR AWARDED SMES:

- Jointly co-create and pilot an innovative solution with a leading SME for a challenge identified by a healthcare organisation.
- Access funding up to 50.000 EUR equity-free.
- Get expert support on business modelling and market insights, and access to networks and resources.
- Network with other European SMEs and organisations in the HealthChain consortium and explore opportunities for forthcoming projects.
- Get the opportunity to work in an international partnership.

Overview



More information [here](#).

Who can apply?

TYPE

Small and medium-sized enterprises (SMEs).

GEOGRAPHY

HealthChain is looking for SMEs based within regions that are already represented in the HealthChain consortium. They must be legally established in one of the following regions:

**ES51 - Catalonia
(Spain)**

**Any region in
Slovenia**

**NL3 - West
Netherlands**

**ES41 - Castilla y
León (Spain)**

**PT11 - North
(Portugal)**

**Any region in
Croatia**

**EL63 - Western
Greece**

**BE2 - Flanders
(Belgium)**

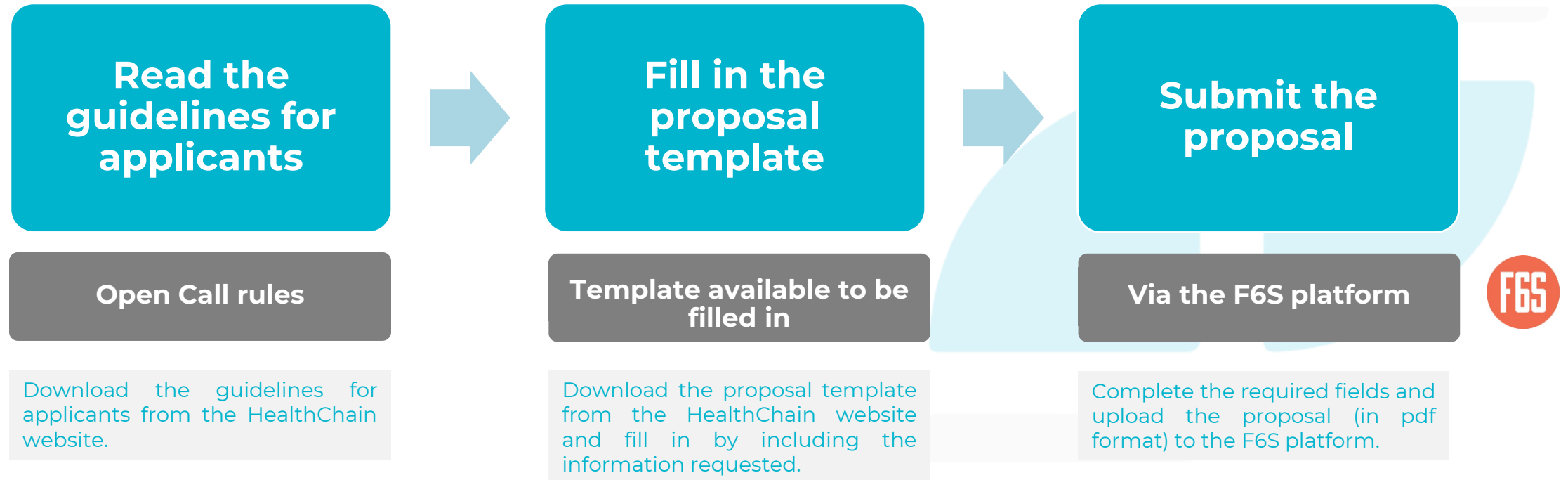
**PT16 - Centro
(Portugal)**

**NL2 - East
Netherlands**

**ES22 - Navarra
(Spain)**

**RO11 - Northwest
Romania**

How to apply?



Deliverables to be submitted jointly with the Leading SMEs

D1.1. Co-creation Agreement and Pilot Action Plan | October 2024

Report outlining the **objectives, activities, timeline, and resources** for testing the innovative solution before its implementation.

D1.2. Interim report on co-creation & pilot deployment | March 2025

Report **describing the implementation of the activities**, including co-creation sessions held, the status of the pilot deployment and results achieved at this stage.

Leading and follower SMEs will provide the **draft business model** for the commercialization of the developed solution.



Interim Review meeting

April 2025

D1.3. Final report on co-creation and pilot deployment | September 2025

Report presenting an **overview of the implementation of the activities**, including co-creation sessions held, pilot deployed, and results achieved.

Leading and follower SMEs will provide the **business model and go-to-market strategy** for the commercialization of the developed solution.

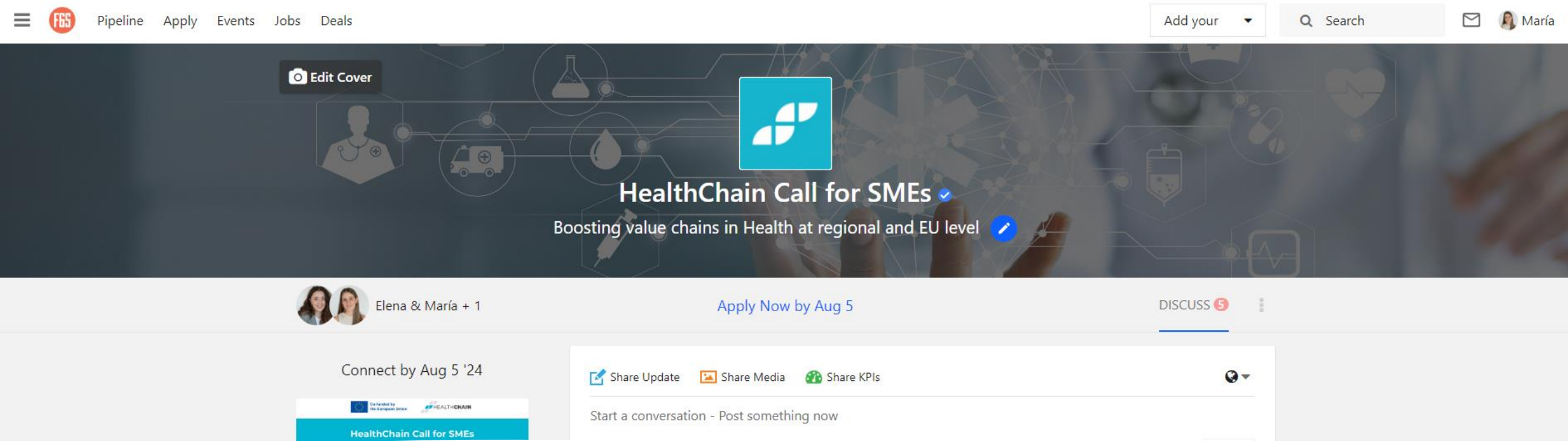


Final Review meeting

October 2025

Financial support for Follower SMEs





F6S blog

- HealthChain provides information to the applicants via the **F6S blog**, so that the information (question and answer) can be visible to all participants.
- Please, make your questions directly on the F6S page.
- HealthChain partners will get back to you as soon as possible via that same page: <https://www.f6s.com/healthchain-call-for-smes/discuss>

Informative webinar recording

WATCH A REPLAY!

A thumbnail image for a webinar recording. It features a blurred background of a person in a white lab coat with a stethoscope. Overlaid on this are various medical and technology icons like a heart, a pill, a microscope, and a network diagram. In the top right corner, there is a small video inset of a woman speaking, with the name 'María Bernabé (TICBIOMED)' below it. The 'HEALTHCHAIN' logo is in the top left. The main text is centered and reads: 'Call for SMEs', 'HealthChain Follower SMEs', and a list of participants: 'Elena López | Ticbiomed', 'María Bernabé | Ticbiomed', 'HealthChain Healthcare Organisations representatives', and 'HealthChain Leading SMEs representatives'. At the bottom, there is a small disclaimer: 'HealthChain project is funded by the European Union. Views and opinions expressed are however those of the author(s) only and do not necessarily reflect those of the European Union or European Innovation Council and SMEs Executive Agency (EISMEA). Neither the European Union nor the granting authority can be held responsible for them.'



Servicio Murciano de Salud

03



The **Servicio Murciano de Salud (SMS)**

- Is the public healthcare agency
- Under the Regional Ministry of Health
- It serves **1.5 M inhabitants**
- With over **23,000 professionals**
- Operating **11 hospitals** and their specialist care centers, **85 health centers**, and **140 medical consultants**
- The annual budget is **€2.500 M**



Co-creation expertise



CHALLENGES, SOLUTIONS & FOLLOWER SMES WORK

04

Challenge 1

PASPADO

A new holistic way to capacitate patients who suffer chronic pain.

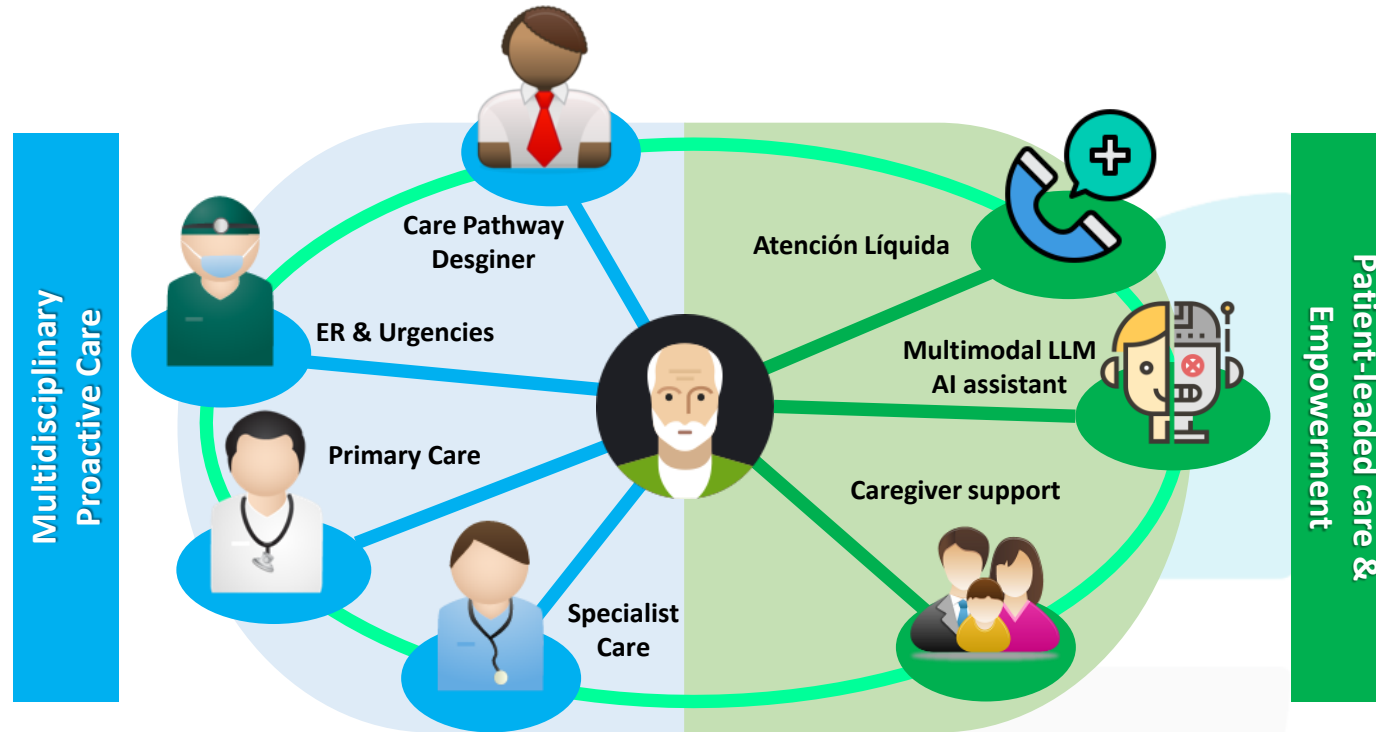
- Achieve more efficient chronic pain management from the healthcare organisation's perspective by improving accessibility and follow-up for patients.
- Promote self-empowerment to enable patients to manage their pain using all available tools, both pharmacological and non-pharmacological.
- Ensure thorough and ongoing patient monitoring and boost continuous remote assistance, avoiding unnecessary in-person consultations.
- Establish a strong connection between patients and healthcare professionals to facilitate high-quality care.
- Develop a unified therapeutic plan to optimize patient outcomes, ensuring patients understand key aspects such as diet, activity, sleep, emotional management, and medication, ultimately enhancing their quality of life.



PALDOC

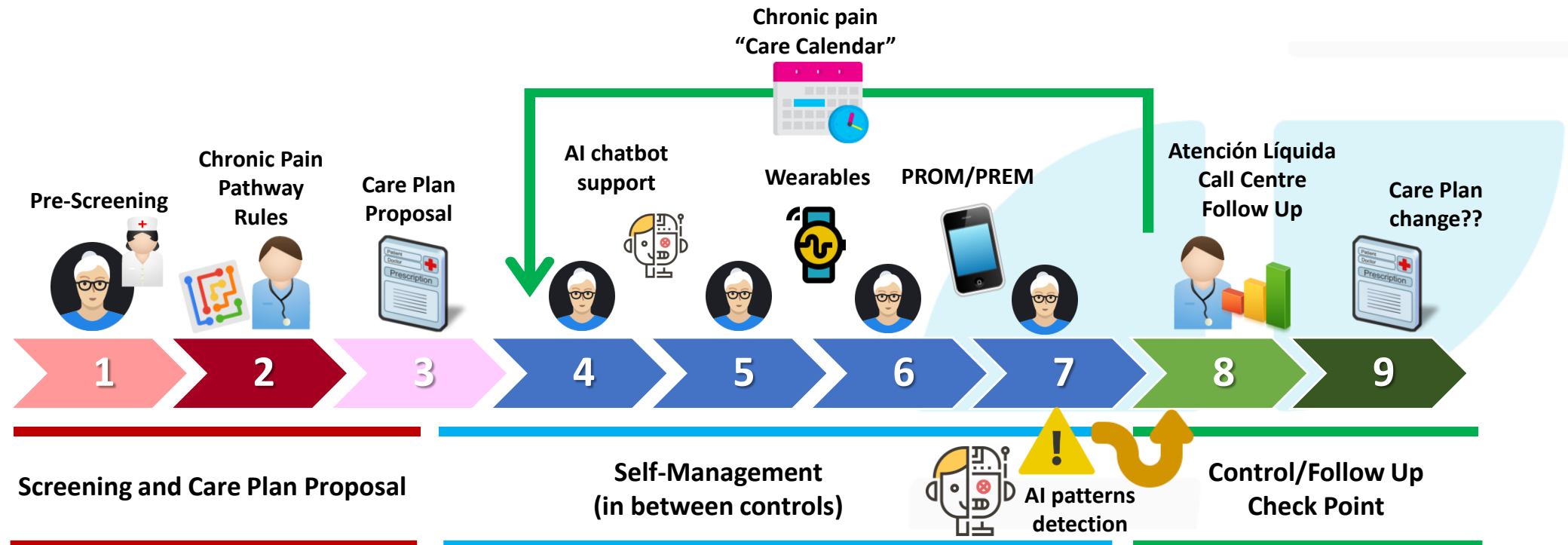
Chronic Pain Liquid Care Platform

Description of proposed solution (1)

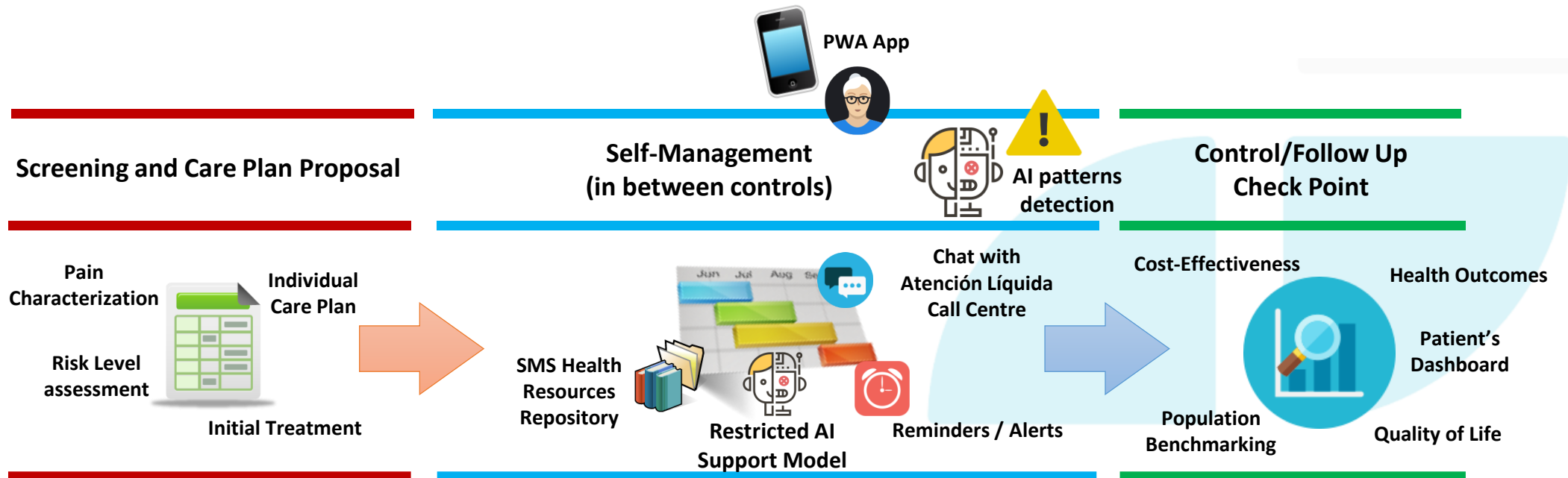


PALDOC Integrated Care Paradigm

Description of proposed solution (2)



Requirements covered by IDI EIKON (Leading SME)



 **AdsuM++ PALDOC**

Work to be done by the Follower SME

- **Collaboration in ALDO AI Assistant Training**
 - Validation of Health Resources Repository provided by the SMS
 - Provision of new Health Resources (chronic pain management documentary repository)
 - Adaptation of available Health Resources to “user friendly languages”
- **Adding Wearables and Medical Devices to the co-created care model**
 - Ability to integrated devices into PALDOC IoT layer using standard APIs or equivalent mechanisms

Challenge 2

K-control!

Interdialysis potassium level intensive monitoring.

- Optimize the management of Hyperkalemia (HK) by intensively monitoring potassium levels in hemodialysis patients, who receive intermittent dialysis sessions 3 times a week (either on Mondays, Wednesdays, and Fridays or on Tuesdays, Thursdays, and Saturdays).
- Develop an effective digital solution for potassium management that engage patients in maintaining a low-potassium diet and promotes self-empowerment.
- Guide and motivate patients to adhere to a potassium-restricted diet in the context of the regional public health service.
- Aim to reduce the rate of complications due to hyperkalemia by integrating this system with both the patients and the corporate systems used by the Murcia Health Service.

renalyse

Kontrol-IT

Pilot test for the Uncertainty Reduction Tool in ambulatory
monitoring of interdialysis potassium

Description of proposed solution



SIMPLE and MINIMAL INVASIVE

Simple drop of blood!
1-2 times per week

+



ULTRA-LOW COST

New screen-printed
creatinine and potassium
sensors

+



USER FRIENDLY

Hand portable & Wireless
connectivity

+



CONNECTED HEALTH

Seamless doctor to patient
interaction

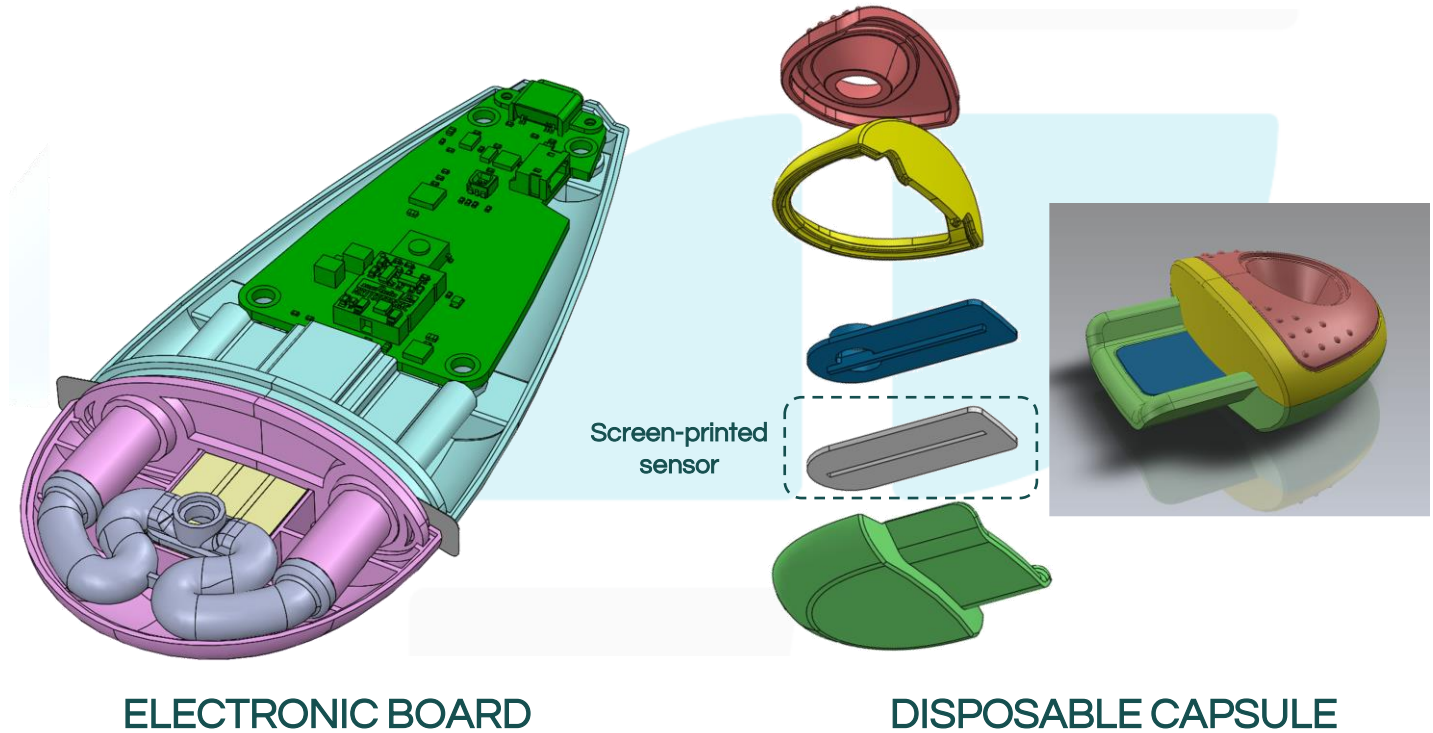
Requirements covered by Renalyse (Leading SME)

FINAL PRODUCT OF RENALYSE'S PROJECT

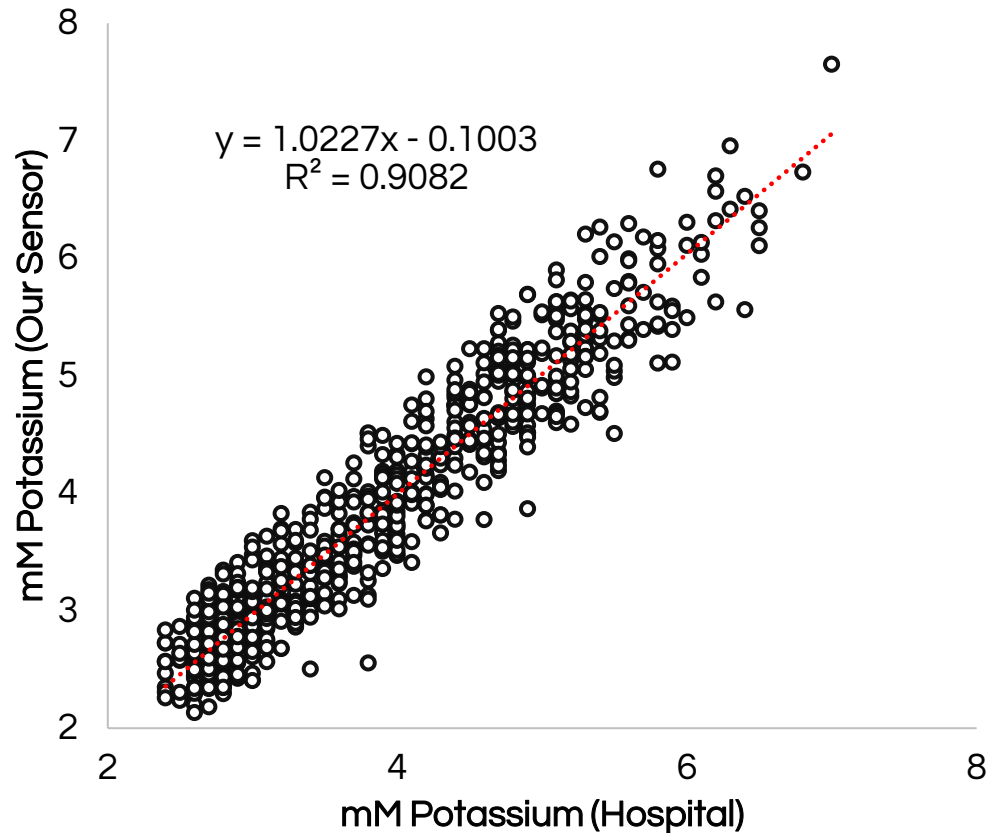


Easy and affordable Point-of-care and
Home use device to monitor CKD patients

=



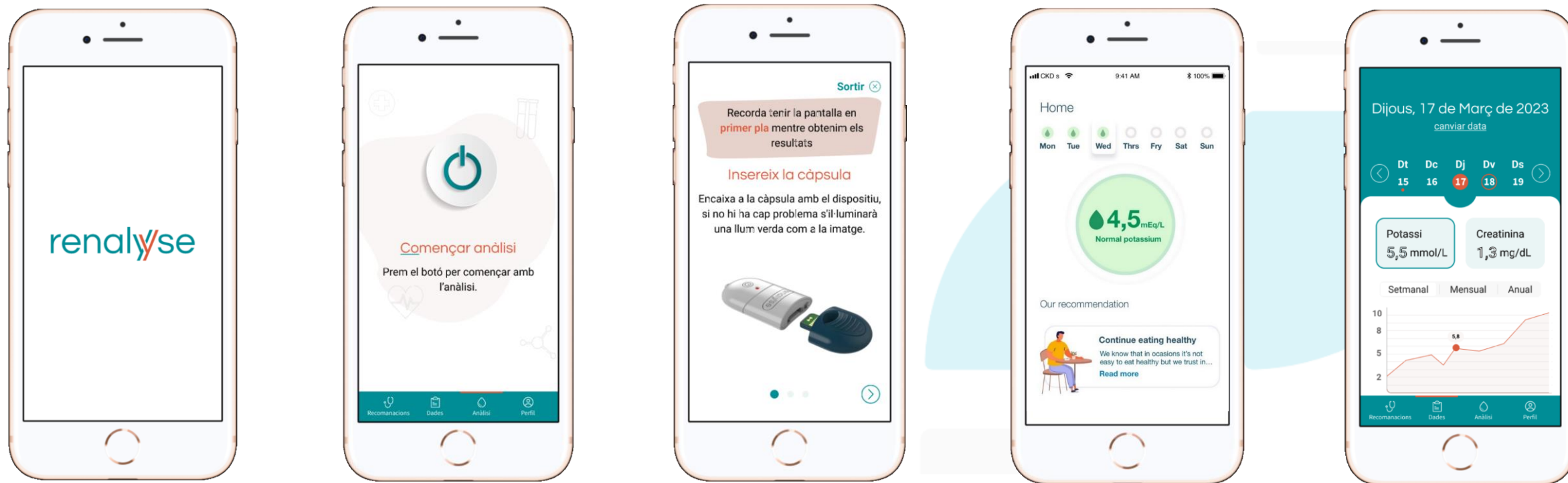
Requirements covered by Renalyse (Leading SME)



300 venous blood samples from dialysis patients analysed

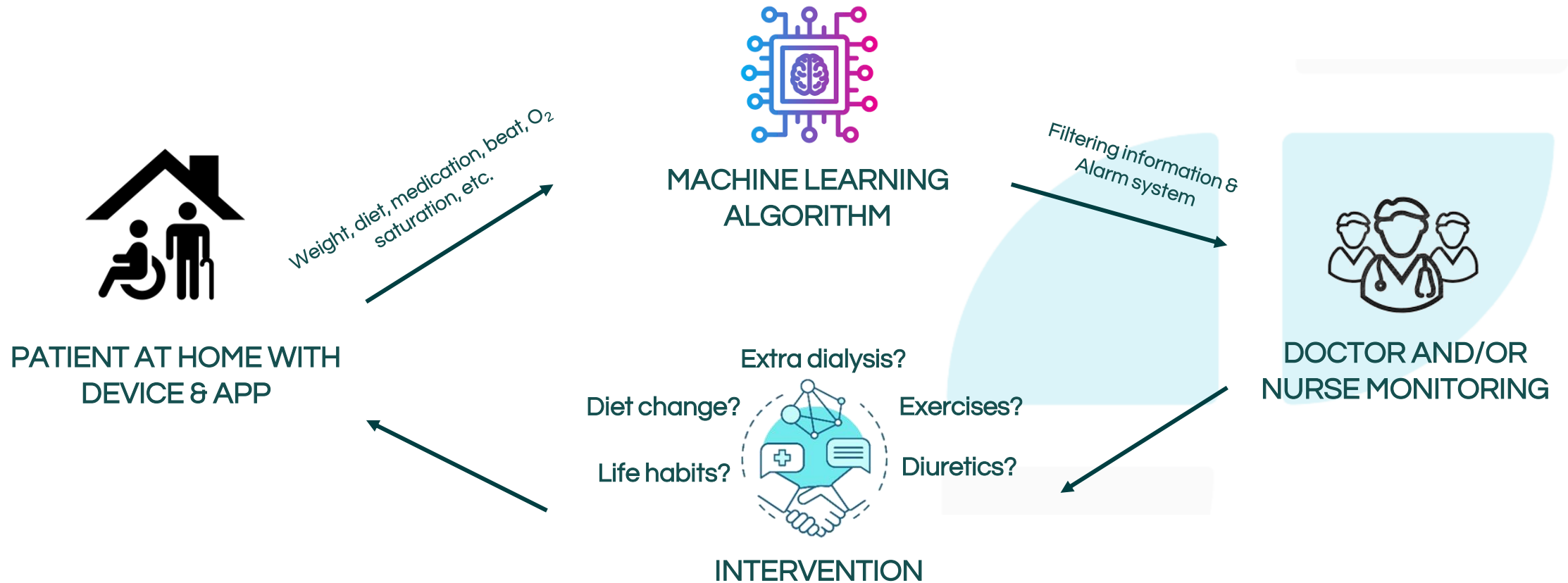
Error less than 20% in whole blood

Work to be done by the Follower SME



EASY-TO-USE APP as a remote symptomatology accessory to facilitate **DOCTOR-PATIENT COMMUNICATION**

Work to be done by the Follower SME

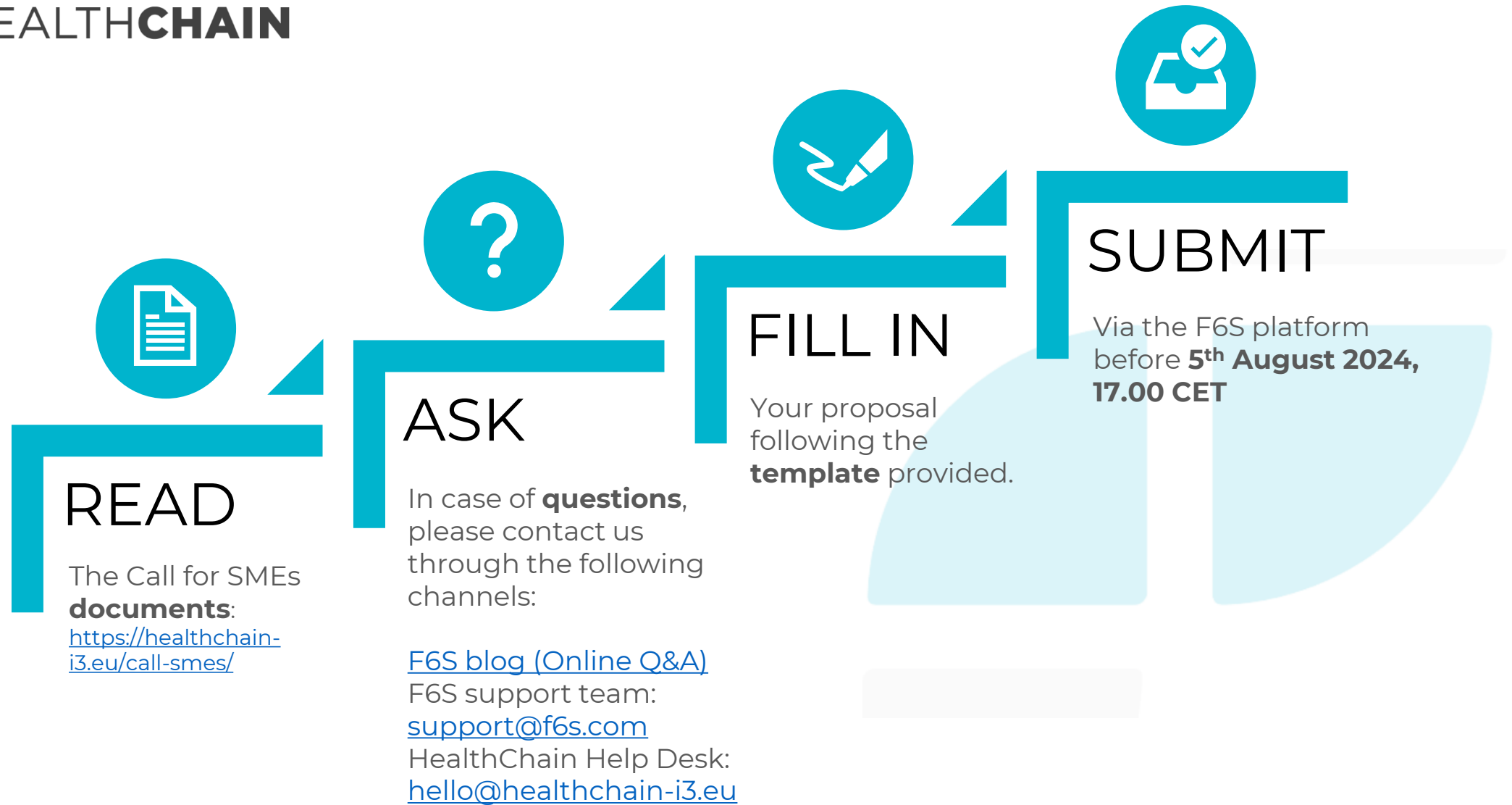


Q&A

05

NEXT STEPS

06



Adrià Maceira - Renalyse: adria.maceira@renalyse.com

Miguel Alborg - IDI EIKON: miguel@idieikon.com

Thank you!

Visit HealthChain I3 on:



www.healthchain-i3.eu



Co-funded by
the European Union